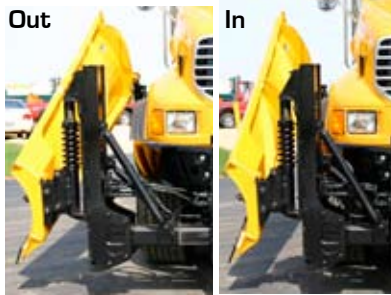


# Front-Mount Patrol Wing Specifications

Trip Edge Model:	8TEWFM	9TEWFM	10TEWFM
Overall Length:	9'	10'	11'
Cutting Edge Length:	8'	9'	10'
Cutting Edge Size:	3/4" x 6"	3/4" x 6"	3/4" x 6"
Taper Height:	28" - 34"	28" - 35"	28" - 36"
Trip Assembly (All models):	[4] 7/8" Torsion Springs		
Trip Assembly Construction (All models):	5" x 3" x 1/2" angle		
Moldboard (All models):	10 Gauge Carbon Steel		
Trip Edge Angle Construction (All models):	5" x 3-1/2" x 1/2" with 1/2" gussets		
Heel Lift Cylinder (All models):	4" x 20" Stroke with 2" Nitrited Rod (Front or Rear Position)		
Toe Lift Cylinder (All models):	3" x 24" Stroke with 2" Chrome Rod		
Front Cross Tube (All models):	7" x 5" x 3/8" Wall Rectangular Tubing		
Rear Pushframe (All models):	6" x 4" x 3/8" Wall Rectangular Tubing		
Push Bar:	1 - Telescoping, Spring Buffered (Hydraulic Optional)		
Finish:	Omaha Orange		

Moldboard Trip Model:	8MTWFM	9MTWFM	10MTWFM
Overall Length:	9'	10'	11'
Cutting Edge Length:	8'	9'	10'
Cutting Edge Size:	3/4" x 6"	3/4" x 6"	3/4" x 6"
Taper Height:	28" - 34"	28" - 35"	28" - 36"
Trip Assembly (All models):	[1] 5" OD 2300 LB/IN Adjustable Compression Spring		
Moldboard (All models):	10 Gauge Carbon Steel		
Bottom Angle Construction (All models):	7" x 4" x 1/2" Boxed with 3/8" plates		
Heel Lift Cylinder (All models):	4" x 20" Stroke with 2" Nitrited Rod (Rear Position Only)		
Toe Lift Cylinder (All models):	3" x 24" Stroke with 2" Chrome Rod		
Front Cross Tube (All models):	7" x 5" x 3/8" Wall Rectangular Tubing		
Rear Pushframe (All models):	1/2" Plate Enclosure with 6" x 4" x 3/8" Cross Tubing		
Push Bar:	1 - Telescoping, Spring Buffered (Hydraulic Optional)		
Finish:	Omaha Orange		



- **Hydraulic Buffer Brace Option** allows the moldboard to be stowed low for visibility  
Sold By:

- **Hydraulic Side Shift Option** to assist with hood opening

## Options

- **Front mounted heel cylinder:** provides parallel lifting of the moldboard to the road surface.



- **Hydraulic Buffer Brace** (above)



- **Rear mounted heel cylinder** (above): Eliminates the chance of front post twist, & better utilizes the decell feature.

- **Moldboard Trip**



1385 Franklin Grove Rd. • Dixon, IL 61021 • www.bonnell.com  
(815) 284-3819 • (800) 851-9664 • Fax (815) 284-8815

Bonnell Industries reserves the right under its product improvement policy to change construction or design details and furnish equipment when so altered without reference to illustrations or specifications used herein. © 2006 Bonnell Industries, Inc.

REV030109

