

TRUCK & ROAD EQUIPMENT NEWS

May 2011

BONNELL
INDUSTRIES INC
TRUCK & ROAD EQUIPMENT

MADE IN THE USA 

Register for Alternative Fueled Vehicle Options Seminar at Bonnell, May 16, 2011. Call 815-284-3819 or register online at www.bonnell.com/altfuel

Introducing the Bonnell Newsletter

I am proud to introduce to you the first Bonnell Newsletter. It is a blessing to address you as the third generation owner of Bonnell Industries Incorporated. Bonnell is a company over 50 years in service, family owned and operated. My father and my Grandfather have made it a priority to serve you. I expect to continue to serve you as they have served you. If at any time you have a need or concern, please turn to us. We are here to help.

We hope you may find information in our newsletter to help you be more productive. We would like to be more informative about what is going on here at Bonnell. You know

what it takes to make us your Truck and road Equipment Provider. We expect to be held to your standards. Please let us know your needs. We are listening.

You know what works and what does not work. As you share your experience with us, we will post it in our Newsletters to offer information to others. Your experience and knowledge will continue to shape us and keep us the best choice in building truck and road equipment.

Sincerely,

Joe Bonnell, President

" I enjoy working with Bonnell Industries because I always get a quick response from the sales department. I've been a Bonnell customer for over 20 years and I have been very impressed with the follow through on orders. Most of what we use Bonnell for is snowplow trucks and commercial body vehicles. Bonnell has employees that know exactly what they are talking about and everyone seems willing to take the time to help me out.

I am quite comfortable recommending Bonnell to any other company with a similar need. "

Kidd Altermott, Commercial Accounts, Friendly Ford, Roselle, IL

It's Road Repair Time



Cracksealer. When it comes time to save your roads by filling cracks, the RMV Crack Sealer is a machine that makes this chore fast and efficient. The RMV Crack Sealer comes in two sizes, 125 and 225 gallon, and can melt down any rubber sealant for seal coating on the market. Its efficient electric heated hose, and overnight heating capability ensures a quick start-up time for maintenance crews. This oil-jacketed system is fully insulated, and is designed to keep material at correct temperatures for long periods of time. The highly innovative heating system keeps the material hot when it leaves the kettle to the tip of the wand, so you don't have to worry about "cold spots."

Find out more information on the entire line of Hot Patchers by calling Bonnell Industries now at 815-284-3819.



RMV CRACK SEALER

BONNELL ATTENDS THE NTEA WORK TRUCK SHOW

The National Truck Equipment Association Work Truck Show was just held at the Indianapolis Convention Center, March 7th-10th. Bonnell was there to learn more about Alternative Fuel Vehicles and Green Truck Technology. In the current condition of our economy and the current cost of Diesel Fuel – these alternative fuel vehicles and clean burning diesel engines look much more attractive. CNG (Compressed Natural Gas) and Liquid Propane Gas burning engines are more available. Not only are these engines more available, conversion kits are available to convert your vehicle over to alternative fuels. As diesel approaches \$4.00 per gallon, LP fuel is still under \$1.99 per gallon.

Hino Truck offers a clean burning diesel engine with great fuel economy. Visit www.hino.com to learn more about Hino. Expect more information from Bonnell as we learn more about these opportunities.



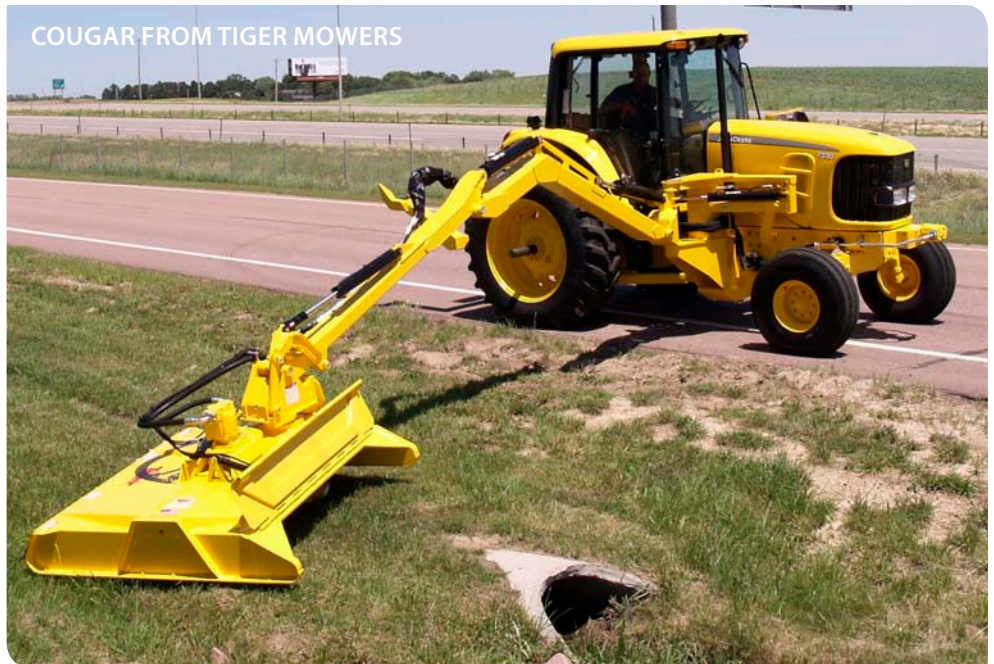
The Grass is Back

Everything is starting to turn green again, and that means it'll be time soon to cut that grass in hard to reach places and around all kinds of obstacles.

When power and reach are required to get the job done, look no further than the Cougar from Tiger Mowers, heavy duty boom mower.

Designed for high horsepower utility tractors, the Cougar provides a commanding reach up to 22'6", a reach out to 24'9", a reach down to 13'8", a transport height of 11', a transport width of 102", and a boom swing of 120 degrees. Cut material up to 5" and with a cutting width of 60", the material head rotates up to 175 degrees.

Contact us for more information and let us help you find the right solution for your mowing needs.



A Well Maintained Gravel Road

The advent of spring brings the promise of warmer weather and feelings of gladness that another winter is behind us with its bitter cold and snow. As the snow melts away and the ground begins to thaw, we find many of our secondary roads in a most despicable condition. We find that spring road maintenance must soon begin, and these roads must be brought back into a usable condition for something other than four wheelers and farm tractors.

The Bonnell 272 road drag is a versatile implement that can be used to bring secondary gravel roads back into shape. At a fraction of the cost of big and heavy maintenance equipment, this drag can remove washboards and pot holes from gravel roads, while at the same time providing crown and contour for proper drainage, and all of this in just one pass per lane.

The usefulness of the Bonnell 272 Road Drag does not stop at secondary gravel roads. It can be used as a leveling and contouring implement on construction sites, ranches and race tracks.

The drag consists of an upper and a lower section. The upper section, or the



running gear, is designed to carry the lower section, or landing gear. The landing gear floats on the ground beneath the running gear during operation. The running gear has two tires that engage the ground at all times which keeps the landing gear from "dog tracking". This gives the operator better control over the machine. The landing gear consists of a series of angled cutting edges which dig and scrape the aggregate loose from the surface. The aggregate is thoroughly mixed as it flows through these cutting edges and then is redeposited behind the drag by a strike off blade that can be ad-

justed to provide the proper road contour.

Pulling the 272 drag requires about 60 HP, and can be accomplished by a variety of pulling vehicles, the most common being single axle dump trucks and farm tractors. The 272 drag is also pulled behind Motor Graders. This combination of cutting and digging by the grader with finishing by the drag makes what would normally be a two pass operation into one very effective single pass.

Use a 272 road drag to provide the residents of your township an additional spring pleasure. The joy of a well maintained road.

Save
the
Date

May 16: Alternative Fueled Vehicle Options

Please join Bonnell Industries and Knapheide Mfg. to learn about the advantages of the various alternative fueled vehicle solutions, along with the body upfits and services provided by Bonnell. 9:00 am - 12:00 pm at Bonnell Industries. Lunch provided at noon. Seating limited. R.S.V.P. by phone at 815-284-3819 or register online at www.bonnell.com/altfuel or send an email to glenn@bonnell.com

“Summer-izing” Winter Equipment

It's time to “Summer-ize” your winter Bonnell snow and ice control equipment. Getting the equipment ready for summer storage can mean better running equipment for next fall. Following are some tips from Terry Garrison.

Hydraulic System:

- [] Check all hoses and fittings for leaks.
- [] Replace “Intake” return filter.
- [] If a high pressure filter is installed replace the filter.
- [] If the truck has a “loadsense” hydraulic pump locate the “High Pressure” ball valve and test closing for proper operation. Lubricate the ball valve.

Truck Equipment Notes

Is your snow removal equipment equipped with electric over hydraulic circuits and controls? (i.e. electronic joy sticks or dial controls.) These type of circuits are extremely susceptible to contamination from debris in your hydraulic oil. Problems and breakdowns caused by dirty oil are extremely difficult to troubleshoot, therefore very expensive! However, there is a proactive and inexpensive measure you can take to prevent this from



happening to you. Any and all electronic systems “should” have a pressure rated filter installed in line between the pump and the valving. This type of filter will catch any contaminants “before” they go into your valve bank and plug or restrict the fine orifices that must work perfectly in order to keep you out there fighting the storm. See your Bonnell sales rep for more info on the “pressure rated filter” you need to help keep your equipment on the road instead of in the garage!

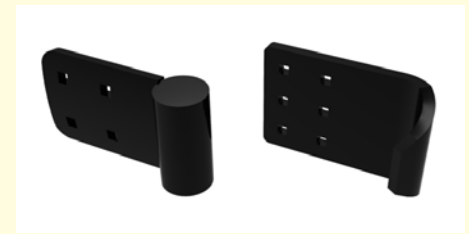
Manufacturing Notes

In 2010 MFG started using an unconventional Polyurethane DTM paint on their products. If you need a beautiful, flexible finish that resists impact and abrasion and delivers years of corrosion protection, choose Amershield, the unconventional polyurethane. High solids, High-build thickness, High Shine and Durable with an 80% gloss level after 4 years. Amershield withstands deformation much better than conventional polyurethanes, which typically fail at 30 inch-pounds when subjected to the ASTM D2794 direct-impact test. Amershield withstands more than four times as much impact and is capable of withstanding ten times more reverse impact as conventional polyurethane.

In 2011 MFG has upgraded our current plasma cutter with the HyPro2000 retrofit torch. With this upgrade we are capable of increased Productivity through 50% Faster Cut Speeds, 75% Longer Consumable Life and a quick-disconnect plasma head. The HyPro2000 technology came from the state of the art Hypertherm 260 High Def. plasma cutter and with this technology we are currently capable of more precision cutting at 50, 130 and 200 amp settings.

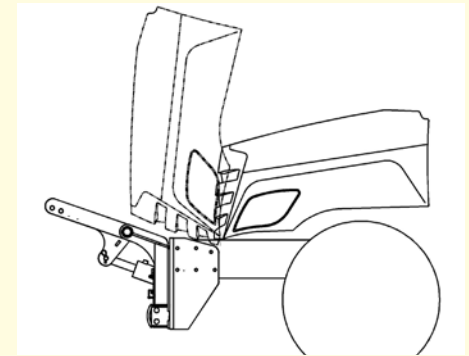
Manufacturing is also happy to announce the addition of PPG Paints Amershield line. This addition will give our customers a wider variety of choices for the equipment.

Engineering Notes



CURB SHOE UPDATE

Bonnell Industries has been manufacturing standard curb shoes for some time now, and we are continually expanding and improving this product line to serve you better. This year we have introduced a new wear shoe for an underbody scraper. If you run scrapers, we hope you will find this shoe effective, both on the job, and on the pocket book. Additionally, we have added two center holes to our 8” curb shoe, to give you more flexibility in mounting positions. Contact your sales person for more information on all of Bonnell Wear Products.



EPA EMISSION REGULATION PLOW MOUNT UPDATES

With the EPA emissions regulations for 2010, engineering has been busy with updates to our line of custom plow mounts. Additionally, in the very near future, we can expect to see new chassis from Western Star, Cat, and Freightliner. For those of you in the Class 7 market, you may want to consider the Hino 338.

Bonnell has introduced a brand new plow mount for the Hino 338. Based on our popular QX frame, the new JQX provides all of the features of the QX in a very compact package. The JQX front frame still offers the dual hook-up option of the QX, along with fold down lift arm, yet the complete assembly is mounted below the top of the frame rails. This configuration provides a lighter, shorter hitch for the 338, providing an excellent match for this Chassis. Contact Bonnell Industries for information on our 338 Demo Chassis, provided through Chicago Mack/Hino.

May 25-26: APWA Conference & Expo

Bonnell Industries will be at Booth #1001 with the Titan Leaf Pro Series of Leaf Vacuums, as well as featuring snow and ice control equipment. The show is being held at the Renaissance Hotel and Convention Center in Schaumburg, IL. Check with your sales rep or call us at 815-284-3819 for more information.

TRUCK & ROAD EQUIPMENT NEWS

May 2011

Don Greenwalt Joins the Bonnell Team

We're pleased to announce the addition of Don Greenwalt, our new truck equipment specialist. Don brings over 20+ years of automotive, truck and snow and ice control equipment experience with him.

Don will be working closely with Scott Reuter in LaSalle County as well as covering Northern Illinois in Truck Equipment Sales, calling on Truck Dealers, end users and contractors.

One of Don's specialties is Knapheide® Truck Equipment. Don and Joe Bonnell recently returned from Knapheide training to learn about their 13 step e-coating process. The product is submerged in the cleaning and primer process with electrostatic adhesion and oven cured. This process provides better corrosion protection for the entire product, even in unseen areas.

For more information on Knapheide and other truck equipment please call Don at (815) 677-3901.



USED EQUIPMENT

P18 Spartan Leaf Pro Plus Self Contained Leaf Collector	\$45,900
LV-1000 Titan Leaf Pro Demo Unit	\$18,900
BON-006800 Bonnell 472 Perfect Road Maintainer	\$15,900
BON-001500.5 Bonnell 272 Perfect Road Maintainer	\$12,600
C-27 Giant Vac Leaf collector	\$11,900
B-1389 Dinkmar Leaf vacuum	\$9,900
RMV-1TD Spaulding 1-Ton Hauler	\$8,900
BVA-1554-CS Bonnell 15 Foot Auger Spreader	\$7,900
B-1199 Swenson 16 foot hopper spreader	\$7,900
BVA-1560-CS Bonnell 15 Foot Auger spreader	\$7,900
B-1388 Dinkmar Leaf Vacuum	\$7,900
B-1374 1990 Chevy C70 with plow and spreader	\$6,600
B-1347 HTC quick sander	\$5,900
B-1378 Giant Vac self contained leaf vacuum	\$5,900
B-1370 American Road Machinery Leaf Vacuum	\$5,900
B-1371 American Road Machinery Leaf Vacuum	\$5,900

See our entire inventory of new, like new, and used equipment with photos and descriptions online at www.bonnell.com



*Please Join Bonnell Industries
and Knapheide Mfg. for a review of:*

ALTERNATIVE FUELED VEHICLE OPTIONS

Learn the advantages of the various alternative fueled vehicle solutions, along with product displays of truck equipment, snow & ice control equipment, leaf vacuums and services provided by Bonnell Industries.

Mark your calendar for this important event coming to your area!

Monday, May 16, 2011

Bonnell Industries, New Adjacent Facility
1415 Franklin Grove Rd. • Dixon, IL 61021 • (800) 851-9664

9:00 a.m. - 12:00 p.m.

(lunch provided at noon) (door prizes)

RSVP by phone, email or online by Monday May 9, 2011

RSVP: Glenn Wallin | 800-851-9664 | glenn@bonnell.com | bonnell.com/altfuel