

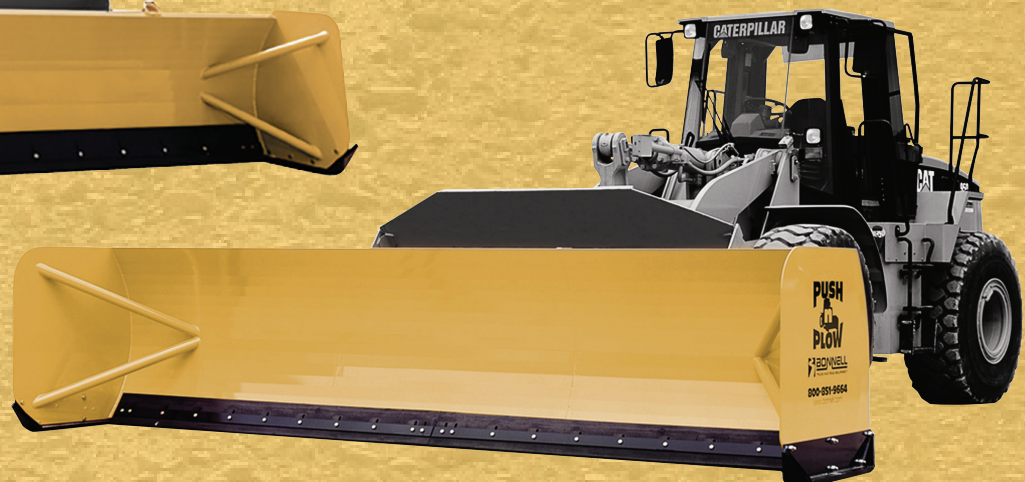
# PUSH -N- PLOW SCOOP PLOW

## ROAD MAINTENANCE

**The Bonnell Push 'N Plow™** is specifically designed to eliminate spill-over and windrows, allowing you to finish your snow removal job faster and more efficiently. Get more jobs done in less time to make your operation more profitable. So put profit in your pocket, place the snow where you want it.



OPTIONAL EQUIPMENT SHOWN



## PUSH -N- PLOW OPTIONS

- ① Chain Binder Kit
- ② Quick Couplers of your choice (ACS Pro Series 2000 shown)
- ③ Push-N-Plow Undertrailer Wing

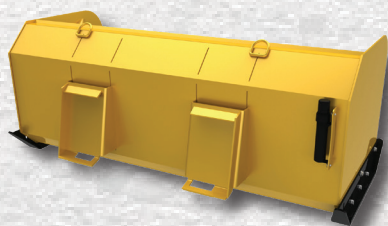


### QUICK ATTACHMENT SYSTEM

The simple quick attachment system allows for easy, rapid connection and detachment meaning you will spend more time on the job, and less time getting ready for it!

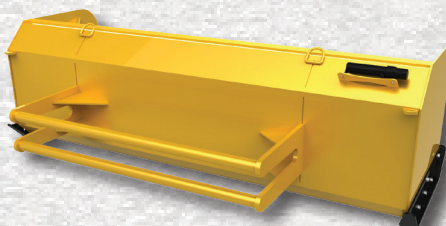
## PUSH -N- PLOW SPECIFICATIONS

|                                      | LDP   | BHP                 | SSP                     |
|--------------------------------------|---|---------------------|-------------------------|
| Height                               | 48"   | 36"                 | 36"                     |
| Lengths Available                    | 10' to 30'  | 10' to 14'          | 6' to 12'               |
| Capacity                             | 12 to 38 yards  | 9 to 13 yards       | 5 to 11 yards           |
| Moldboard to End Plate Reinforcement | Two- 2-1/2" Pipes   | Two- 2" Pipes       | Two- 2" Pipes           |
| Wear Shoe Material                   | 1-1/4" x 4" AR400 Steel                                     | 1" x 4" AR400 Steel | 1-1/4" x 4" AR400 Steel |
| Lifting Eyes                         | Yes   | Yes                 | Yes                     |
| Finish                               | Caterpillar Yellow  |                     |                         |
| Endplate Construction                | 3/8" Endplate   |                     |                         |
| Wear Shoe Type                       | Bolt on Reversible/Replaceable                              |                     |                         |
| Cutting                              | 1 1/2" x 10" Adjustable Rubber (Punched to AASHTO Standard) |                     |                         |
| Moldboard Constructions              | Continuously Welded 3/16" Double-Paneled                    |                     |                         |



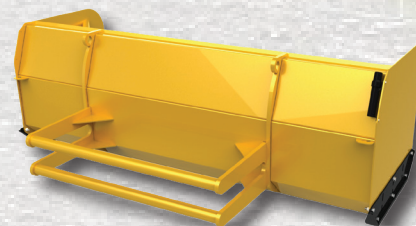
### MODEL SSP

Designed to fit current models with Quick Attach System



### MODEL BHP

2-1/2" Schedule 40 pipe continuously welded to 1" steel plates and reinforced with 3/8" plate gussets.



### MODEL LDP

3" Schedule 40 pipe continuously welded to 1-1/4" steel plates and reinforced with 3/8" plate gussets. ACS, JRB & Balderson Hook Ups (Available Upon Request.)



www.bonnell.com • (800) 851-9664 • info@bonnell.com  
1385 Franklin Grove Rd. • Dixon, IL 61021



**AUTHORIZED DEALER:**